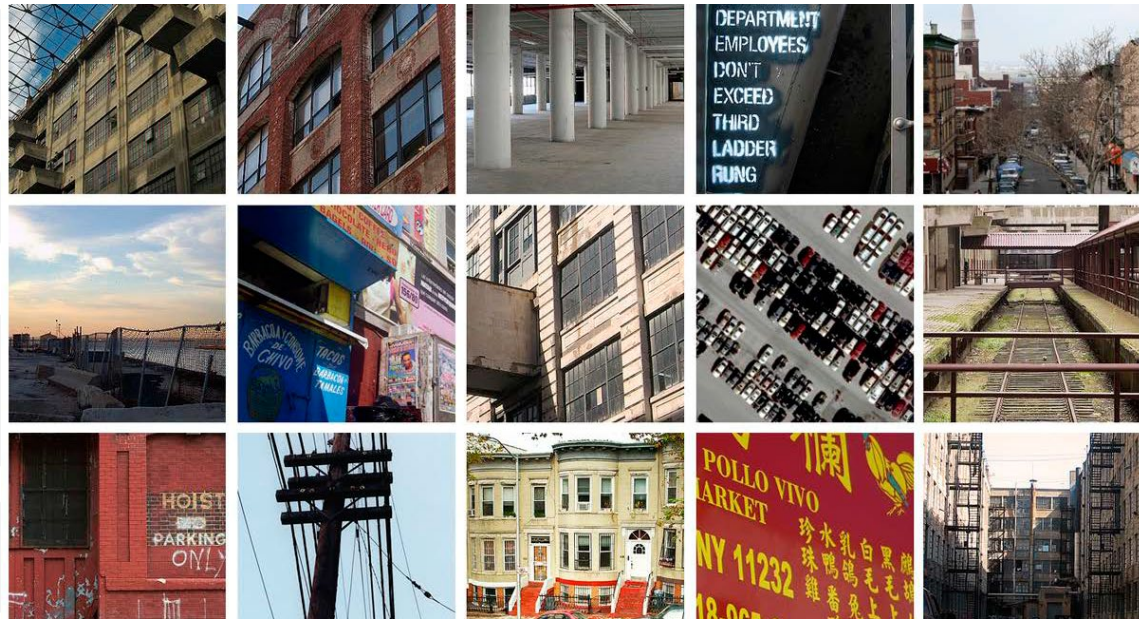


# Sunset Park Task Force

May 13, 2020

**NYC** / **EDC**



# Agenda

- Welcome, Introductions
- SBIDC Updates
- NYCEDC Site-Specific and Districtwide Updates
- Sunset Park Task Force COVID-19 Experiences & Response Efforts

# Ground Rules

- During the meeting, please remember the following:
  - ✓ Please keep yourself muted when you are not speaking
  - ✓ Please do not interrupt while other members are speaking
  - ✓ Please raise your hand if you have a question or comment and the moderator will call on you

# SBIDC Updates

# Workforce Trends

- Brooklyn ITC Workforce1 Team working remotely since mid-March
- Able to hire **part-time and seasonal** positions
  - Manufacturers of essential equipment and goods (e.g., Garment; Food)
  - Moving goods and people (Logistics/Warehousing; Transportation; Construction)
- **19 placements** in March and April; several Sunset Park businesses: M Factory; Mega Aid Pharmacy; Rvinyl
- **Businesses:** reach out to Wayne Small at [wsmall@sbidc.org](mailto:wsmall@sbidc.org)
- **Jobseekers:** register with Workforce 1 at <https://www1.nyc.gov/site/sbs/careers/virtual-wf1cc.page>
- Anticipated: training and subsidized employment



Laura Marin, a recent graduate of Course of Trade, a training program in sewing for the apparel sector hosted in the headquarters of designer Malia Mills, center, and Libby Mattern, the production director for swimwear and ready-to-wear of Malia Mills and founder of Course of Trade.

# COVID-19 Experiences & Response Efforts (SBIDC)

With businesses suffering, SBIDC has shifted to help with Covid-19 recovery, helping appx. 150 businesses:

- Apply for City and federal loan programs (PPP; EIDL)
- Find opportunities to make / sell essential goods or provide support to medical personnel
- Get technical, financial, legal and safety guidance
- Hire essential workers

## Some Major Issues:

- Survival: PPP and other loan compliance; rent and mortgages; insurance claims
- Financing options: proving inaccessible and insufficient to reopen and to maintain their current employees (capital access will be issue moving forward)
- Bringing employees back: safety; transportation; child care

# NYCEDC COVID-19 Response Efforts

# Coordinating on Citywide COVID-19 Response

Coordinating closely with NYC Emergency Management, DOHMH, DCAS, MOCS and City Hall, NYCEDC has reprioritized its work to focus on immediate response and long-term recovery

EDC's response is focused on these categories:

- Activating space for emergency needs
- Supporting businesses and New Yorkers
- Manufacturing and sourcing medical supplies
- Supporting food supply and construction logistics
- Long-term citywide economic recovery

**Produce or  
Donate  
Supplies to  
Fight  
Coronavirus**



# Ongoing Response: Space for Emergency Management

Facilitate use of sites to set up surge hospital capacity, store critical supplies to support City response

- Identified sites within the portfolio of EDC-managed assets to support response efforts by NYC Emergency Management to:
  - Meet hospital surge capacity
  - Store critical supplies, including medical, non-medical and food
  - Logistics support like truck parking, rest areas and delivery



**Kingsbridge Armory Bronx**  
Emergency food packaging and delivery hub



**South Brooklyn Marine Terminal**  
Currently being used for emergency purposes



**Brooklyn Army Terminal**  
Contemplated COVID19 testing site



**Hunts Point Bronx**  
Supplier trucking facility for central delivery hub



**Cruise Terminal Brooklyn**  
Medical facility to serve up to 750 NYC patients - has not yet been activated

# Ongoing Response: Business Support to New Yorkers

Working closely with tenants and New Yorkers broadly through small business programs

- SBS Programs as bridge to Federal relief
- Tenant coordination on EDC-assets
  - Constant communication with tenants on latest guidelines
  - Small Business Administration (SBA) application support
    - Paycheck Protection Program (PPP)
    - Economic Injury Disaster Loan (EIDL)
- Keeping New Yorkers working to serve New Yorkers
  - Manufacturing at BAT
  - Essex Market and Hunts Point Food Distribution Center
  - Coordination with food czar on food supply chain support



# Ongoing Response: Sourcing Medical Supplies

Inspiring response from New Yorkers willing to pitch in individually and as a business

- Manufacturers across New York City raised their hands to help **Over 2,500 inbound offers received** via EDC form
- EDC in coordination with City Hall, DCAS, MOCS, H+H, DOHMH, NYC EM, and other agencies.
- Sourcing is informed by need; Evolving daily based on agency input
- Identify corporate partnerships for large-scale donations, supplies and services

*Gowns being manufactured through Open Jar Studios*



*Above: Boxed face shields delivered to DCAS warehouse;*

*Below: Gowns prepped for delivery*



# NYCEDC Site-Specific & District Wide Updates

# Site-Specific Project Updates:

## Brooklyn Army Terminal

### Upcoming Construction

- Building A Lobby and Patio Renovations – All construction at BAT is currently paused

### Upcoming Events and Programming

- Turnstile Tours are giving virtual tours of BAT
- All public events are paused at this time

## Bush Terminal Piers Park

- Lighting and Sinkhole Project

## Made in New York Campus

- Soundstage RFP: NYCEDC continues to negotiate with multiple respondents
- RFEI for Garment Hub innovation space released November 2019; rolling responses through Summer 2020
- Garment Hub and Public Realm interior demos started Fall 2019; construction work started in Spring 2020 but is on pause per Executive Order 202.6

## South Brooklyn Marine Terminal

- Currently being used for temporary emergency purposes
- Continuing to develop capital and tenaning plan on the site for parts of the offshore wind industry

Q & A

# Sunset Park Task Force Member Updates

# Sunset Park Task Force

## COVID-19 Experiences & Response Efforts

- How has your organization pivoted in response to the public health/economic crisis?
- What challenges have you observed in your community/constituency?
- What has been most challenging for your business/organization over the last two months?
- What resource/s has your organization or business found most valuable?
- Can you share some good work that you or your neighbors are doing?