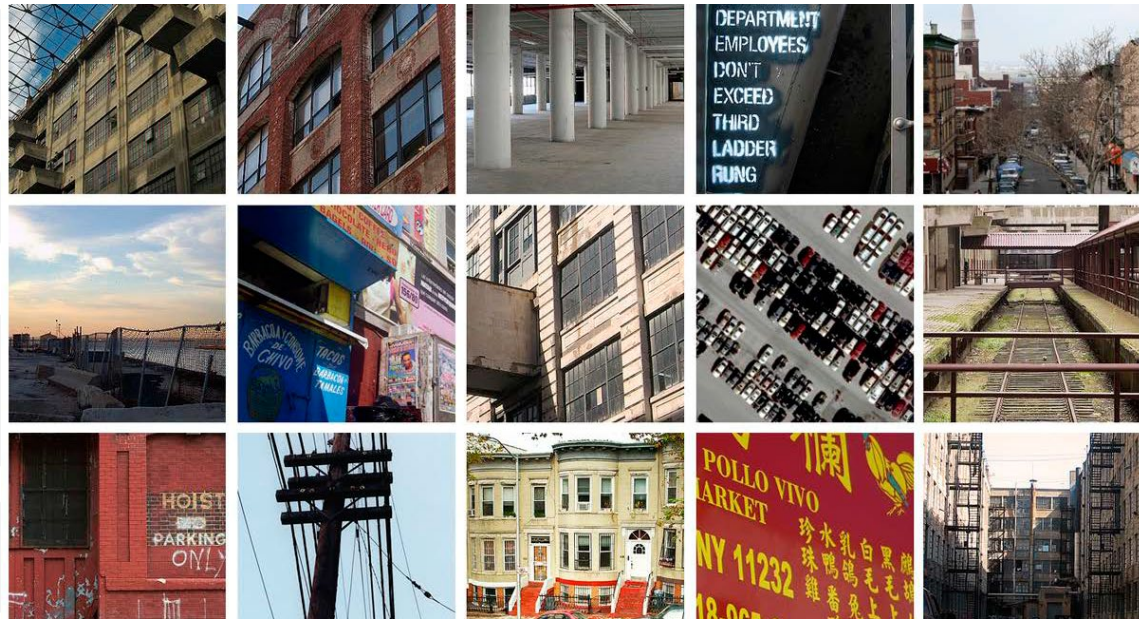


Sunset Park Task Force

January 29, 2020

NYC / **EDC**



Agenda

Part I

- Welcome, Introductions
- In-Depth Updates / Discussions
 - Sunset Park Workforce Research (OBT/Perch Advisors) Presentation
 - Offshore Wind (OSW) in NYC (Equinor) Pt. II

Part II

- Site-Specific Updates
 - South Brooklyn Marine Terminal
 - Made in NY Campus at Bush Terminal
 - Brooklyn Army Terminal
 - Other District Updates
- Workforce Trends
 - Workforce1 Center
- Districtwide Updates
 - One-way Pair Transportation Study
 - Infrastructure Project



Bridging the Gap: Connecting Sunset Park Residents to a Changing Workplace

Preliminary Findings + Recommendations

Presentation to Sunset Park Task Force
January 29th, 2020

Project Overview

The objective of this project is to understand the job opportunities along the waterfront, what these roles look like, what skills they require, and how to better align residents' skills and interests with local training opportunities to help Sunset Park residents access these jobs.

EDC engaged OBT + Perch in late Spring 2019 to do this research.

Methodology

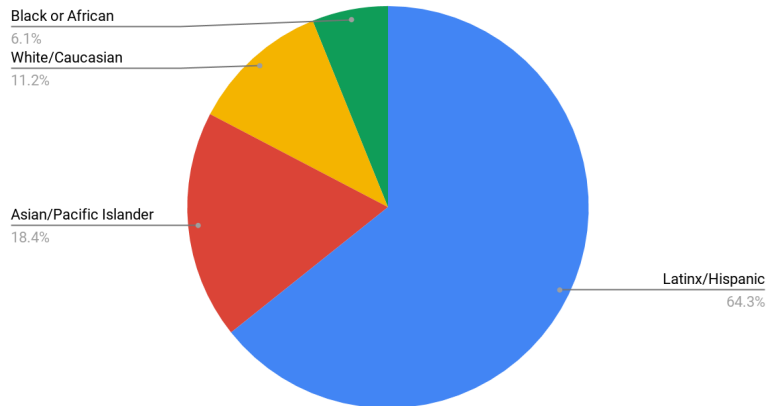
For this research, Sunset Park is defined as the boundaries of Brooklyn Community Board 7, which also includes parts of Windsor Terrace.

What we wanted to learn	Methodology
Sunset Park demographic information	Data Analysis of publicly available American Community Survey (ACS) and Public Use Microdata Sample (PUMS) data
Residents' education, aptitudes, and awareness of growing jobs	Conducted and collected 374 resident surveys
OBT training program alumni job search experiences in the tech and tech adjacent space	Conducted 4 TechStart alumni interviews
Employers' hiring practices and job requirements for entry level jobs	Conducted interviews and focus groups with 17 employers
Sunset Park nonprofit training landscape and capacities	Conducted surveys with 8 locally based job training providers in Sunset Park
Existing models nationwide that served similar communities, trained in digital literacy, and could potentially influence solutions locally	Conducted 6 interviews with workforce programs/organizations in other localities training in innovation jobs/digital literacy space

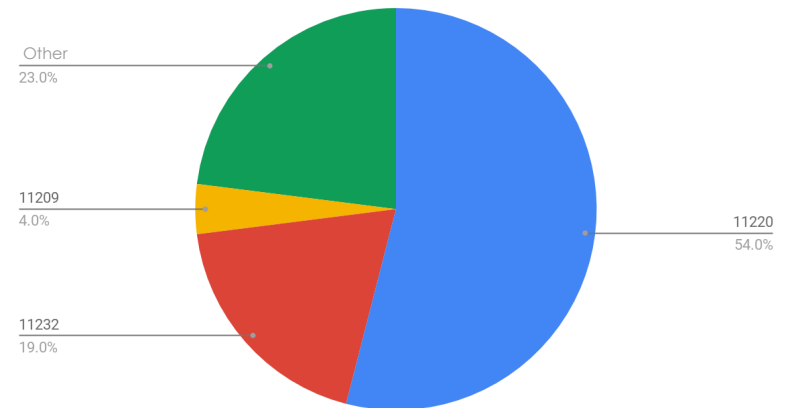
Methodology

RESIDENT

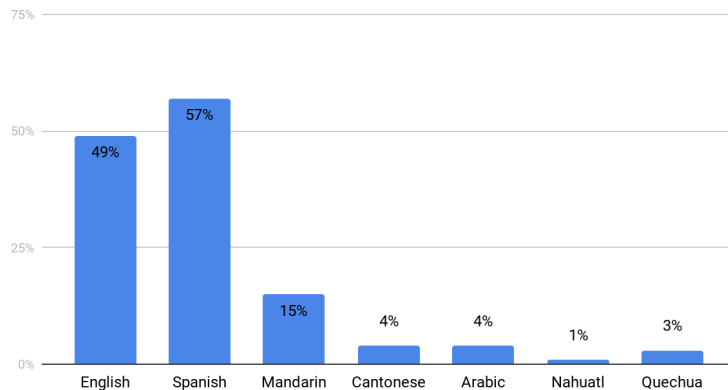
Ethnic breakdown of survey completers



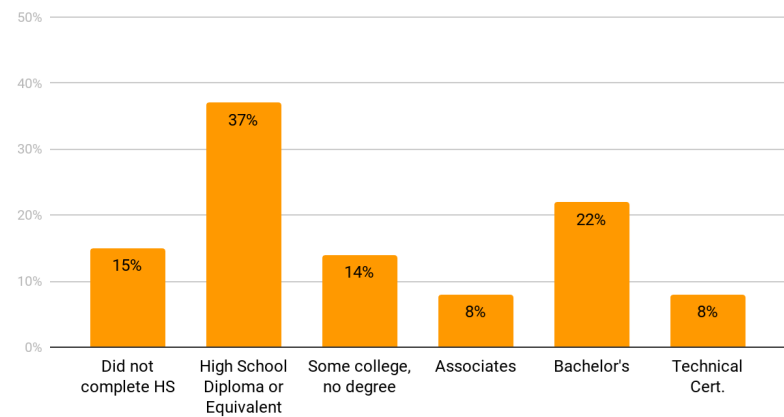
Zip code distribution of survey completers



Survey responders' language proficiency



Formal education & industry-certified credentials



Methodology

EMPLOYERS INTERVIEWED (17)

Manufacturing - 12

- Printing - 2
- Garment - 3
- Design - 4
- Other - 3

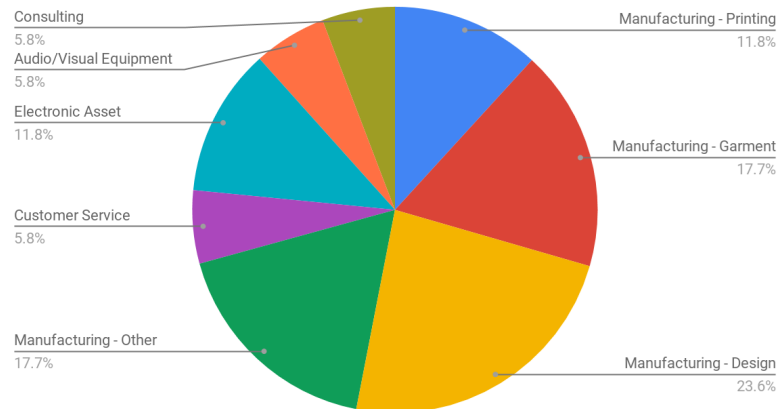
Customer service - 1

Electronic Asset Management Disposition - 2

Audio/ visual equipment rental and services - 1

Consulting - 1

Employer Industries



JOB/SKILLS TRAINING PROVIDERS SERVING SUNSET PARK (7)

Fifth Avenue Committee, Sunset Spark, Chinese-American Planning Council, Southwest Brooklyn Industrial Development Corporation, SCO/ Center for Family Life, Opportunities for a Better Tomorrow, Brooklyn Workforce Innovations (BWI)

WORKFORCE PROGRAMS INTERVIEWED OUTSIDE OF NYC (6)

Bitwise Industries, Fresno, CA

Code Louisville, Louisville, KY

Detroit at Work, Detroit, MI

SF Made, San Francisco, CA

Telegraph Academy, Oakland, CA

Treehouse, Nationwide

Key Findings

1. Local Awareness of Jobs

- Residents are largely unaware of what the jobs are + what is required to get hired
- Localized marketing strategies can promote jobs and careers that may be perceived as inaccessible to communities

1. Readiness for Jobs

- Employers are seeking workplace readiness + digital literacy
- Lack of in-depth experience with technology is a barrier to entry with tech companies
- Training programs need to be flexible in schedule
- Training opportunities need to be available at multiple level of skill and experience

1. Local Pipeline + System Collaboration

- Employers find local hiring challenging and are unaware of local CBOs role
- Improved collaboration between SP workforce CBOs and employers would increase local access to jobs
- CBOs play an important role as intermediary

Recommendations

Recommendation 1: Trainings to bridge the skills gap between employer needs and residents' currently self-reported skill level.

- Digital Literacy in ESOL Courses
- Two-Tier Work Readiness Bridge Programming
 - Tier One: Bridge to Basic Work Readiness + Digital Literacy
 - Tier Two: Advanced Trainings [tech, manufacturing, for example]

Recommendation 2: Awareness Campaign to share what jobs exist in the community and how residents can build skills to access them.

Recommendation 3: Sunset Park Industry Advisory Board to provide an ongoing forum for employers, city government, and CBO partners to interface regularly.

Recommendation 4: Sunset Park organizations involved in designing/redesigning training receive **capacity-building support**.

Additional Findings

Key issues that require further research:

1. Connecting undocumented immigrants to economic opportunities
 - a. Nearly a quarter of those surveyed were not authorized to work in the U.S. This is a population that would benefit from training programs and job connections, but lack of documentation is a barrier
2. Offering skills training in languages other than English
 - a. 32% of survey respondents were Spanish-only speakers and 11% were Mandarin-only speakers.
 - i. Of Mandarin speakers, 84% only speak Mandarin
 - ii. Of Spanish speakers, 62% only speak Spanish
3. Training and preparation needs for jobs in sectors such as manufacturing/advanced manufacturing and offshore wind

Next Steps

Share Out and Engagement with:

1. CBOs who participated in the research
2. Wider CBO community in Sunset Park
3. Elected Officials in Sunset Park and surrounding neighborhoods
4. City Agencies (SBS, Office of Workforce Development, HRA)
5. Community Board 7 committees on Education and Economic Development



Let's power New York's
future together



Julia Bovey
Director, External Affairs | Equinor Wind US



Bringing European Expertise to the US



Bottom fixed

Sheringham Shoal
In production

317_{MW}

Dudgeon
In production

402_{MW}

Arkona
In production

385_{MW}

Empire Wind
In development

816_{MW}

Dogger Bank
In development

3600_{MW}

Floating

Hywind demo**
In production

2.3_{MW}

Hywind Scotland
In production

30_{MW}

Batwind
Installed

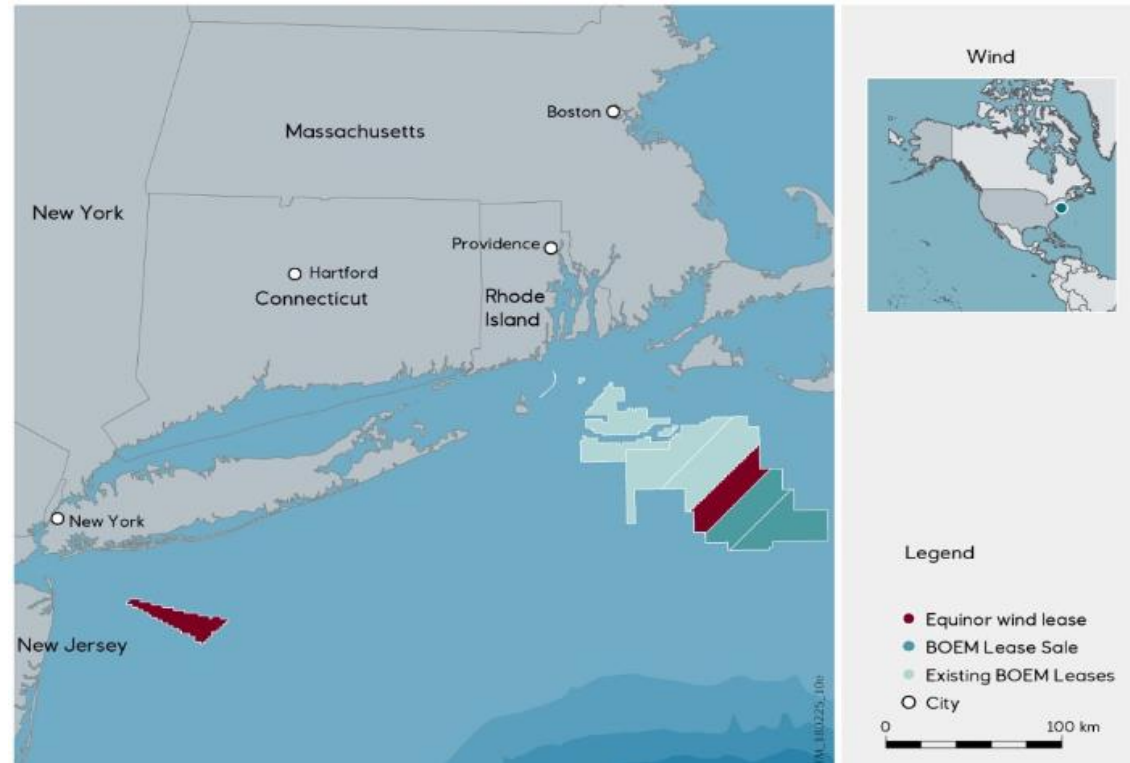
1_{MW}

* Figures: Installed capacity, 100% basis.

** Sold to Unitech, January 2019

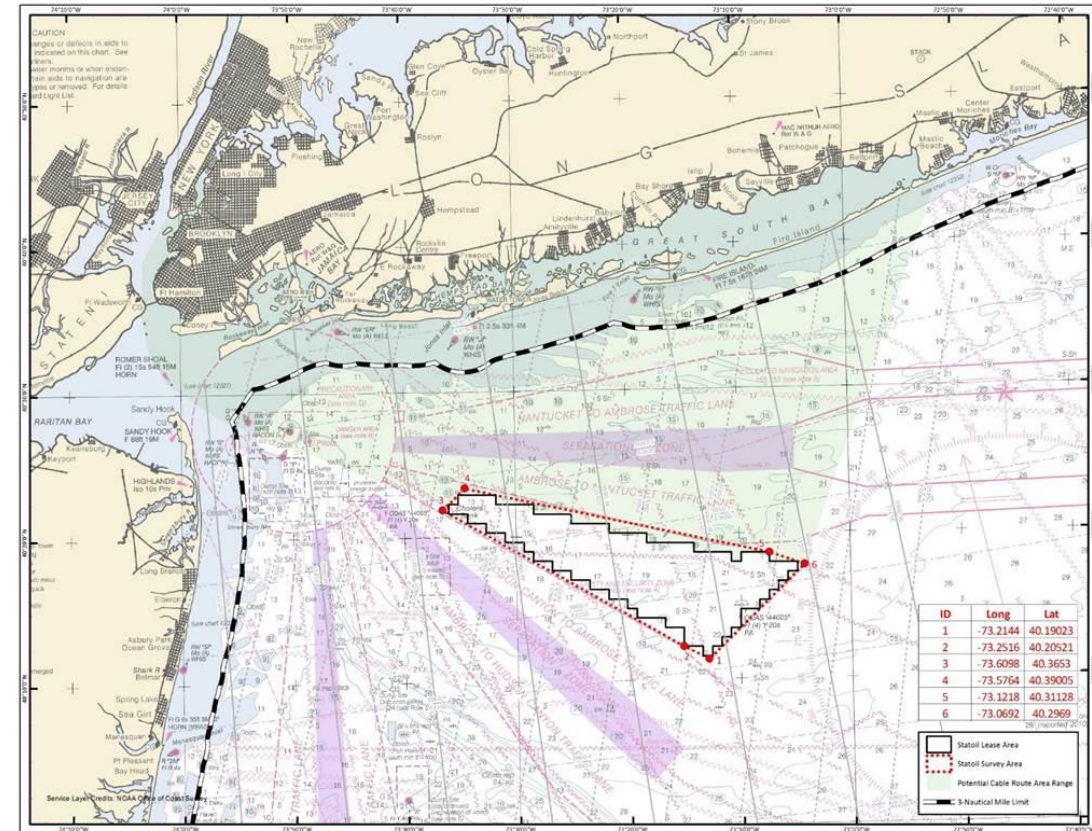
Equinor Wind in the US: leading position in US offshore wind

- ✓ New York
- ✓ New Jersey
- ✓ New England



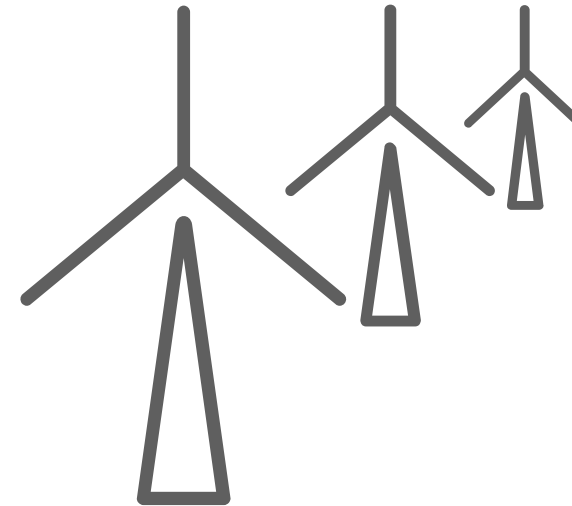
Empire Wind: Key facts

- NYSERDA award capacity: 816 MW
- Foundations: Gravity-Based (Concrete) manufactured in the Capital Region
- Operations and Maintenance (O&M) base in New York City
- Proposed onshore substation: Gowanus
- Next generation turbines
- Water depth: 65 – 100 ft
- Construction period: 2022-23
- Electricity Delivered to New York: 2024+



On-shore activities needed for Empire Wind

1. Foundations manufacturing
2. Turbine staging/assembly
 - Transition Pieces
 - Towers
 - Blades
 - Nacelles
3. Interconnection cable landing
4. On-shore interconnection substation



Empire Wind at SBMT: what might it look like?

- All drawings and simulations to follow are intended for discussion and consideration **ONLY**.
- Community and stakeholder input are crucial for decision making.

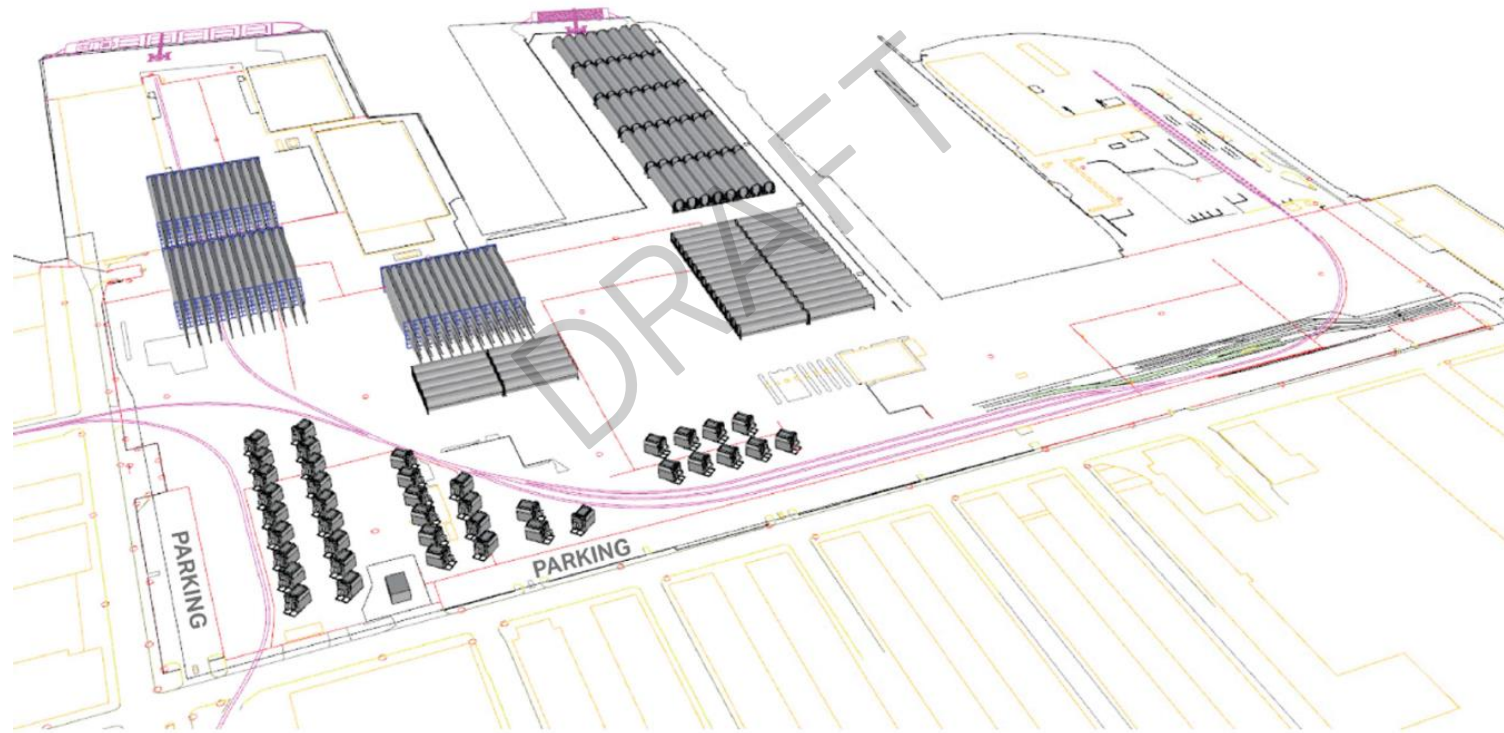


Empire Wind at SBMT: what might it look like?



Empire Wind at SBMT: what might it look like?

Draft only: Layout subject to discussions with local community and other stakeholders.



OVERALL LAYOUT - AERIAL

GE - Nacelle Dimensions

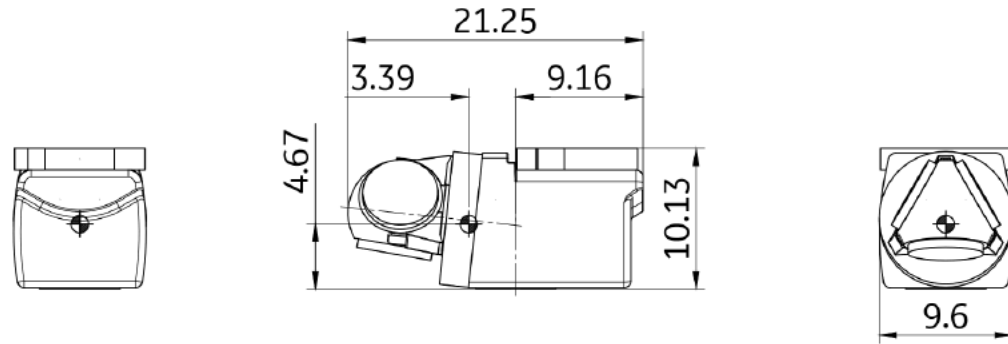
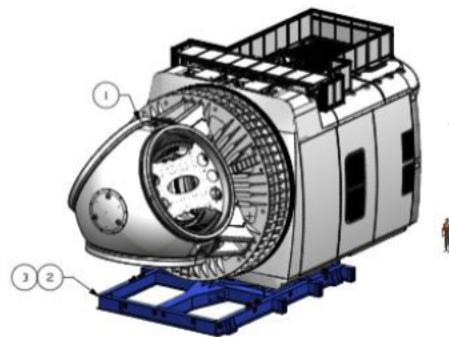
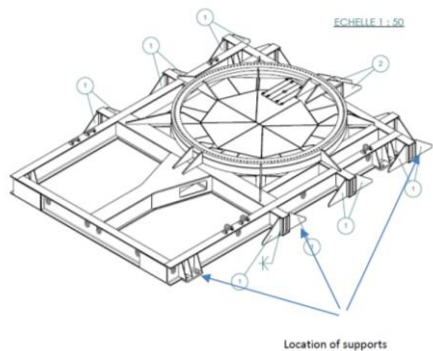
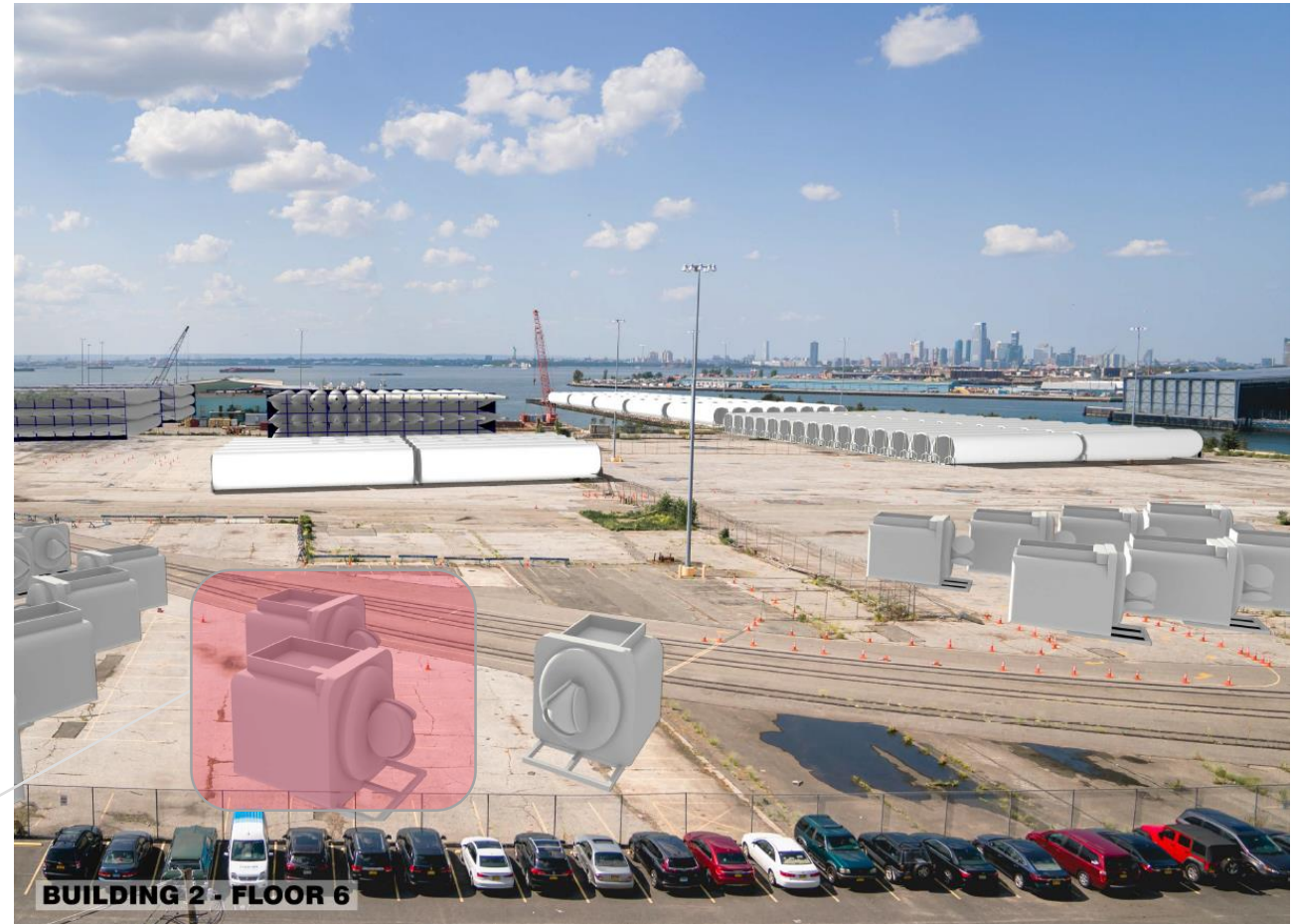


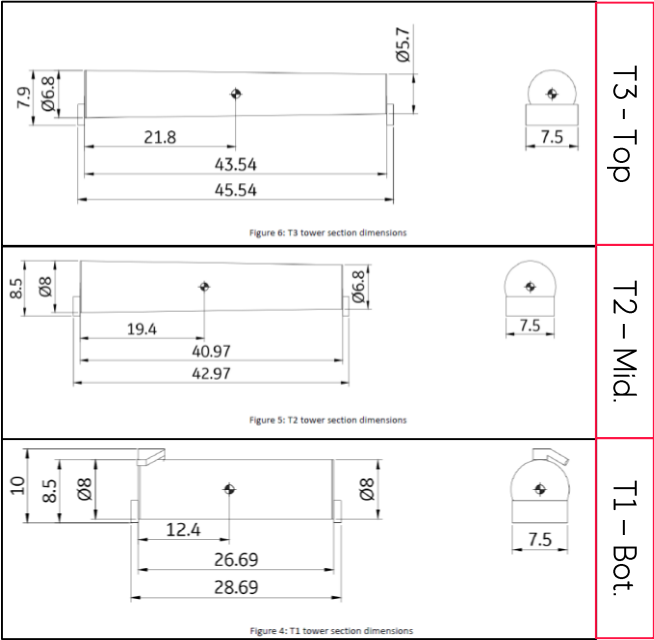
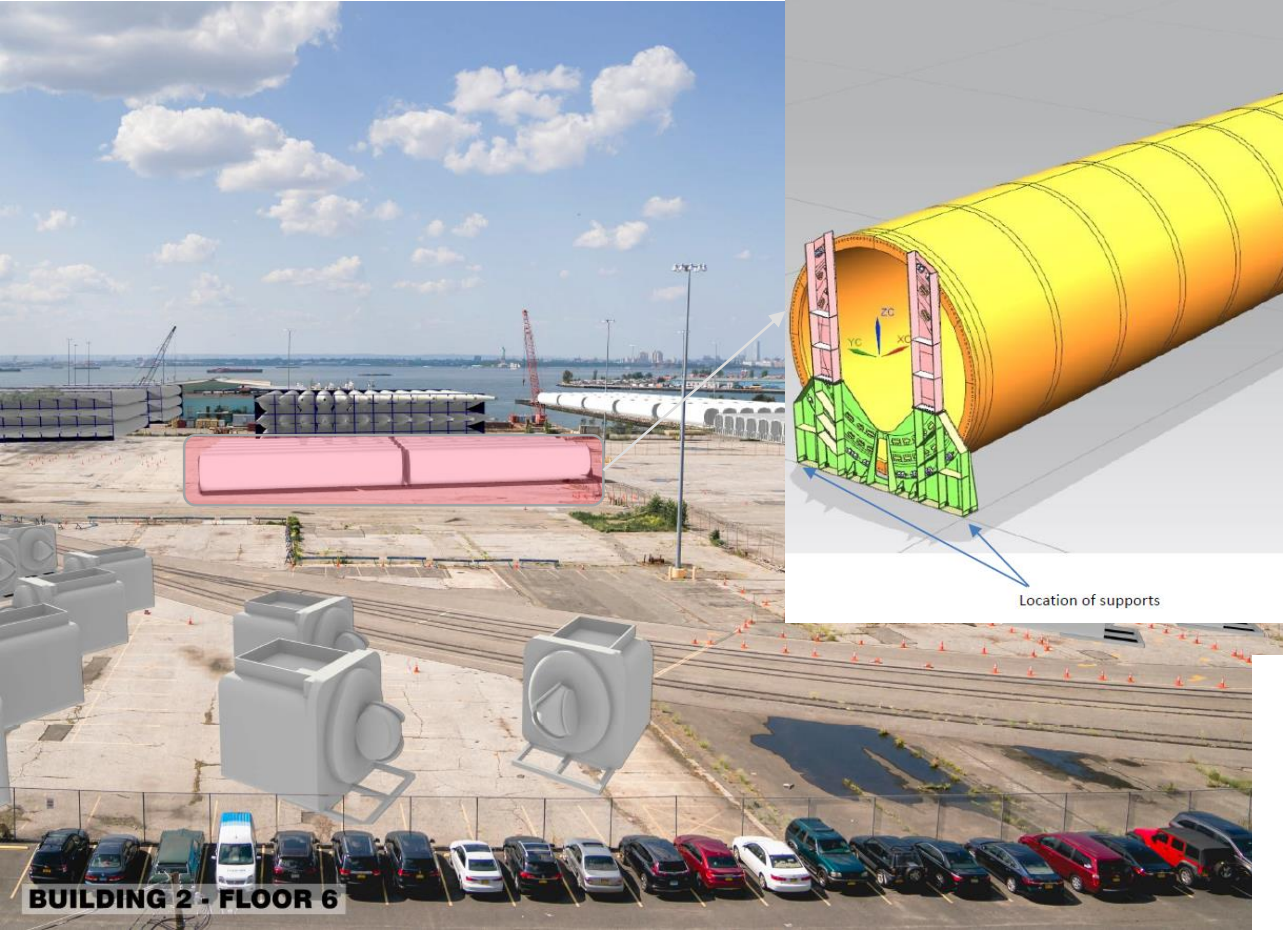
Figure 1 Main dimensions of Nacelle on its transport frame

WEIGHT OF NACELLE AND FRAME

	Component	Mass (t)
1	Nacelle	685
2	Transport frame	42
3	Nacelle + frame	727



GE - Tower Dimensions

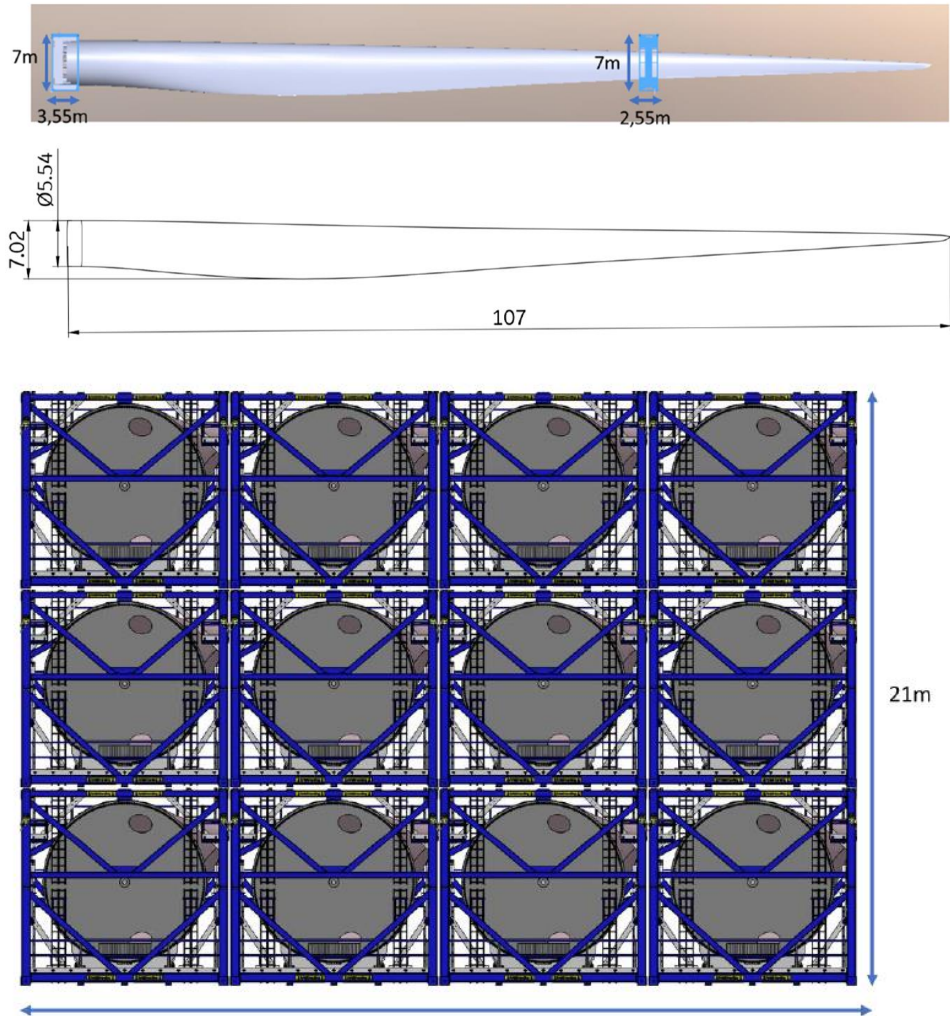


WEIGHT OF TOWER SECTION AND FRAME

Tower Section	Mass (t)	L X W(m)	Height (m)	h cg (m)	Dbot (m)	Dtop (m)
T1 with frame	279 (included frames:30t)	28.7X8	10	12.4	8	8
T2 with frame	286 (Included frames:30t)	43X8	8.5	19.4	8	6.8
T3 with frame	246 (included frames:30t)	45.5X7.5	7.9	21.8	6.8	5.7
Tower (T1+T2+T3) without frame	721		113.2	48	8	5.7

Note: dimensions and weight of the tower sections are project dependent and the values given above are **for information only**.

GE – Blades Dimensions



WEIGHT OF BLADE AND FRAME

	Component	Mass (t)
1	Blade (including blade flange + M36 studs)	60
2	Transport frame (x2)	37
3	Blade + frames	97
4	Blades + frames (in three layers)	291

	Blades dimension with transport frame	M
1	Length	110
2	Width	7
3	Height	7

Empire Wind: Operations and Maintenance (O&M) base in Brooklyn

- Proposed O&M base at South Brooklyn Marine Terminal
- Direct labor: approx. 50-70 full-time jobs
- Indirect labor: additional staffing working from the base:
 - Turbine suppliers
 - Vessel workers
 - Other contractors – e.g. Installation and construction contractors, equipment contractors, vessel captains, etc.



Dudgeon O&M – East coast UK



Contact: Julia Bovey
Director, External Affairs
jbov@equinor.com
www.empirewind.com
Twitter: @EquinorWindUS

Site-Specific Project Update:

South Brooklyn Marine Terminal

- Ongoing steps:
 - Finalize capital sub-tenanting
- As plans are finalized, we intend to return to the Task Force to:
 - Share capital and tenanting plan
 - Discuss projected truck volumes associated with proposed uses
 - Develop workforce development strategies tied to identified jobs on the terminal
- In July, New York State announced 2 winners for the first large-scale offshore wind project for 1700MW of power:
 - SBMT has been identified as a potential site for parts of the offshore wind industry (manufacturing, staging and installation, operations and maintenance, transmission)
 - SSBMT competing for state investment of up to \$200 million for port infrastructure upgrades
 - Timeline given by the State is:
 - port upgrades begin mid-2020
 - construction for onshore operations by Q3 2022
 - offshore construction start by Q4 2022
 - projects online by Q2 2024
- Community Special Projects Fund
 - SPF Subcommittee met in October 2019; discussions with subcommittee members & NYCEDC staff ongoing

Site-Specific Project Update:

Bush Terminal

Bush Terminal Piers Park

- Lighting Project – to be completed Summer 2020
- Sinkhole repair on north entrance pathway – TBD pending permitting process

Made in New York Campus

- Soundstage RFP: NYCEDC continues to negotiate with multiple respondents
- RFEI for Garment Hub innovation space released November 2019; rolling responses through Summer 2020
- Garment Hub and Public Realm interior demos started Fall 2019; construction work to start Spring 2020



Site-Specific Project Updates:

Brooklyn Army Terminal

Upcoming Construction

- Building A Lobby and Patio Renovations

Upcoming Events and Programming

- REDC Financial Seminar / Annex– February 13, 2020
- NYPD 1st Quarter Build The Block Meeting– February 18, 2020
- DSNY ReFashion Week Opening Event– February 22, 2020
- NYCxDESIGN Xpand Event – May 16, 2020
- Boricua Festival @ Pier 4 – June 27, 2020

Vessel Village

- The Urban Agricultural Barge at BAT Pier 4 aims to increase access to the Sunset Park Waterfront through free and low-cost community programming
 - EDC will issue the RFP for a programming partner in February
 - The selected respondent to the RFP will be responsible for programming the barge, as well operating and maintaining the vessel, and docking it during the off-season winter months

Other District Updates

Workforce Trends

(data as of 12/31/19)

Hires facilitated by the Brooklyn Industrial & Transportation Center:

- From January 2019 December 2019, the Brooklyn Industrial & Transportation Workforce1 Career Center connected New Yorkers with 128 jobs (100% full-time) with an average wage of \$15.75 per hour.

Sunset Park residents (zip codes 11220, 11232) connected to employment by the Workforce1 system (across all locations):

- From January 1st, 2019 to December 31st, 2019, the Workforce1 system connected Sunset Park residents with 68 jobs with an average wage of \$22.87.

Brooklyn ITC Community Partner Hires

- From January 1st 2019 to December 31st 2019 = 27

Top Community Partners:

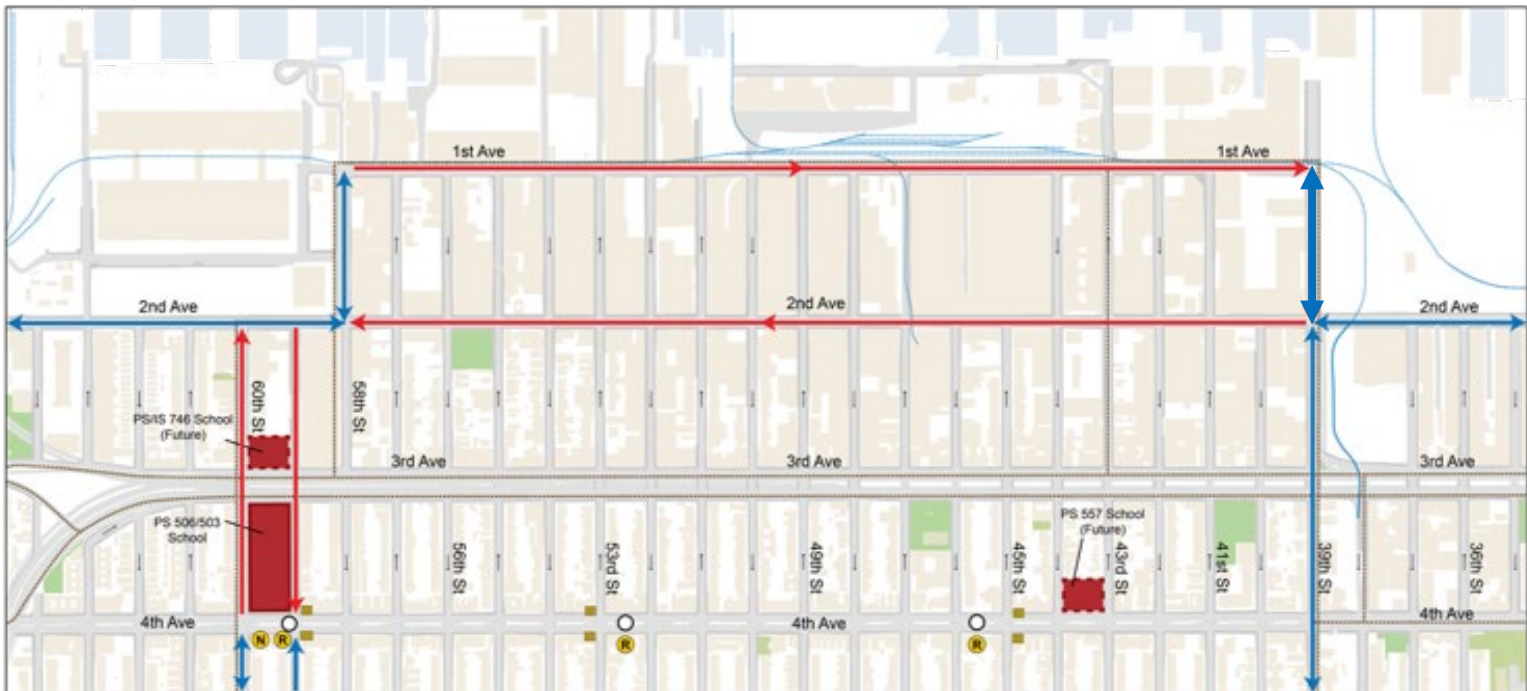
- Center for Family Life
- Core Services Group
- Fifth Avenue Committee
- Red Hook Initiative



District Update:

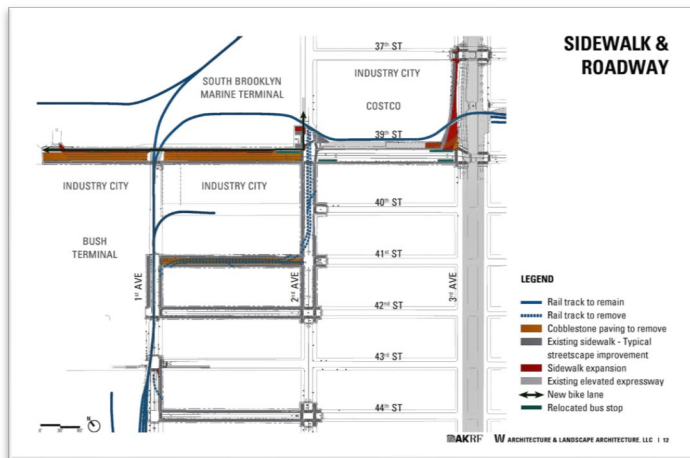
One Way Pair Study

- Finalizing emergency access plan with NYU & DOT
- Coordinating with MTA on how one-way configuration would align with bus routes
- Planning to return to CB/community in Spring for input on updated plan



District Update:

Infrastructure Project: Bidding & Construction Spring 2020



- Design Completed: Winter 2020
- Bidding: Spring 2020
- Construction: Spring 2020 – Spring 2022

